

## DRY BATTERY

### DRY | CONVENTIONAL

## REF BB16L-B



**12v** VOLTAGE - V

**215A** CCA - A

**20Ah** CAPACITY - Ah (20Hr)

**19Ah** CAPACITY - Ah (10Hr)

#### TECHNOLOGY

- Lead acid dry charged construction (absorbed acid)
- No acid in cells, must be filled with acid before use
- 6 & 12V batteries

#### FEATURES

- Upright installation only
- Has to be checked periodically and refilled with water if necessary
- Internal gas emission through venting hole
- Handle with care to prevent acid spillage
- Regular life duration
- Does not need to be recharged while stocked

#### UPGRADE FOR

#### WEIGHT

Battery (with acid): Approx 5.97kg

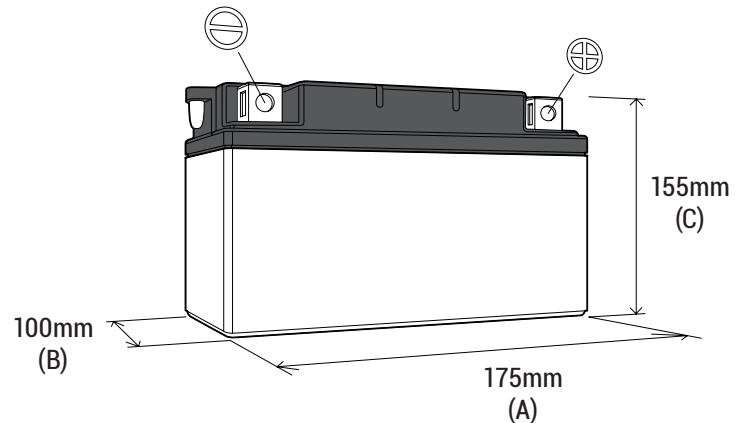
#### MOUNTING ANGLE



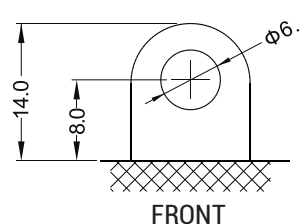
Upright installation only

#### DIMENSIONS

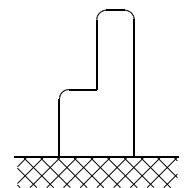
Length (A): 175mm ±2mm  
Width (B): 100mm ±2mm  
Container height: 155mm ±2mm  
Total height (C): 155mm ±2mm



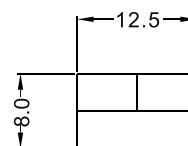
#### TERMINALS (mm)



FRONT



SIDE



TOP